

# CLYDESDALE

at Cottonwood Park



**4 Bedroom, 2.5 Bath, 2 Car**  
**Finished SF: 2,108**

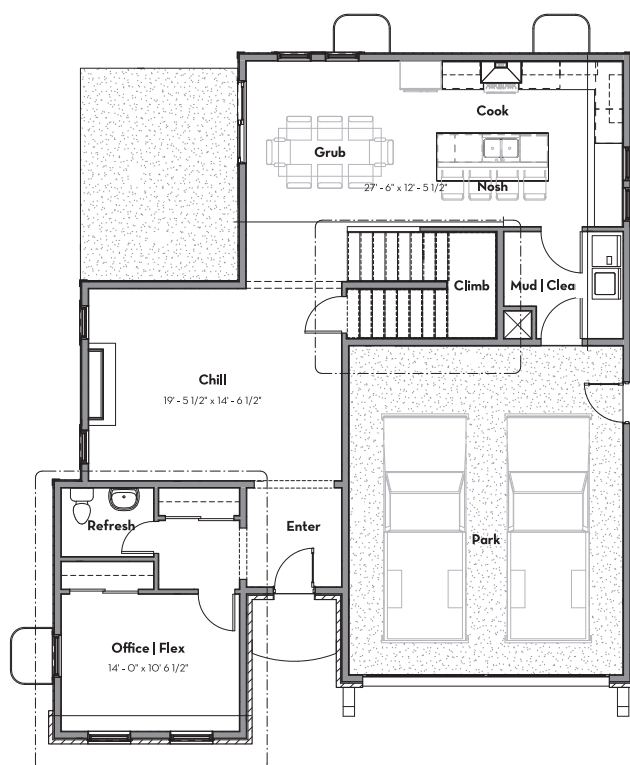
## The Clydesdale

Two-story model featuring an open main level floor plan and an oversized two-car garage with the option for a three-car garage. This style highlights **2,108 square feet** of living space with four bedrooms and two and a half bathrooms. The spacious kitchen includes granite countertops (with an option to upgrade to quartz), stainless steel appliance package, custom cabinetry and a center island. The Clydesdale features a lavish master suite with a 5-piece master bath, a laundry/mud room, and optional gas fireplace.

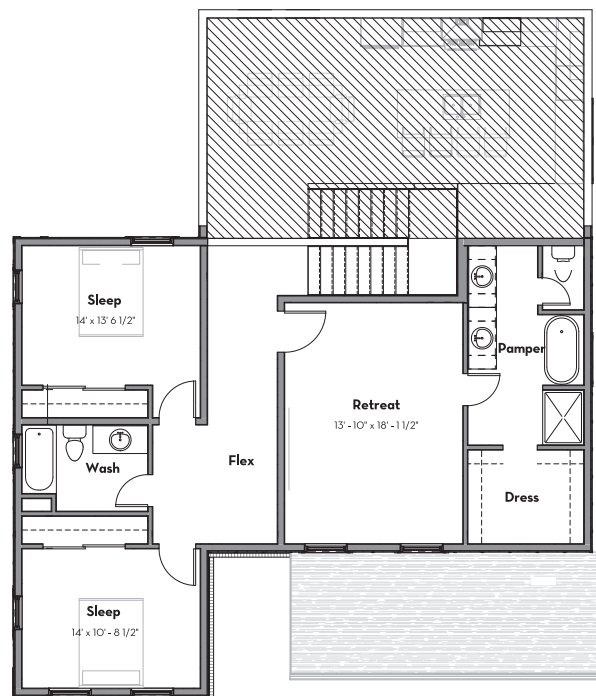
### Highlights

- Two-tone interior paint
- Hardwood flooring in kitchen, entry, and dining
- Granite countertops in kitchen & bathrooms
- Center island in kitchen
- Stainless steel appliances with refrigerator
- Laundry/mud room
- Main floor office/flex room/4th bedroom
- Master suite with 5-piece bath
- Exterior stone on front façade

## First Floor



## Second Floor



### Included Features:

#### Included Standard Features

- Plumbing fixtures in brushed nickel & oil rubbed bronze
- Interior and exterior door options
- 2 interior paint options
- Designer lighting package in brushed nickel & oil rubbed bronze
- 6 exterior stone options
- Designer exterior paint selections
- Passive radon mitigation system
- Front yard landscaping
- Tiled bathrooms
- Cabinet hardware in brushed nickel & oil rubbed bronze

#### Included Kitchen Features

- Stainless steel appliances with refrigerator
- Clear Alder cabinetry with 6 finish options
- 6 granite countertop options

### Additional Options:

- Finished basement with bedroom, bathroom & flex area
- 3-car garage
- Single bowl kitchen sink
- Upgraded cabinet door style
- Finished garage
- Whole home humidifier
- Gas fireplace
- Air conditioning
- Rear yard landscape package
- Quartz counter tops
- See **model options** page for a full list

Plans and pricing subject to change without notice.



FR-CORP.COM