



# EAST VILLAGE

## AT RIGDEN FARM

---



## About East Village at Rigden Farm

Welcome to East Village at Rigden Farm - FR's newest community in Fort Collins! Here at East Village, you're close to everything that makes Fort Collins great - excellent opportunities for shopping, top-ranked schools, and easy access to some of the best outdoor activities in the nation.

Not only that, you're getting a high quality home with an excellent value. Everything - from kitchen appliances to landscaping - is included with an FR home. That's because we have Higher Standards - for you, and your family.



## About the builder

East Village LLC is an affiliate of FR, a developer of new home communities in northern Colorado featuring truly cutting edge designs, brilliant uses of space and natural lighting, and a higher level of standard features than the competition.





**Plat Map**

## Quick Facts **Fort Collins**

- Fort Collins is approximately 5,000 feet above sea level
- As of 2015, Fort Collins had a population of 158,600, with a median age of 29.3 years old
- The city has more than 600 acres of parks, 40,000 acres of natural area, and 20 miles of off-street hiking and biking trails
- Fort Collins is home to Colorado State University, Colorado's only land-grant university, which was created as a part of the Morrill Act



## Shopping

- Historic Old Town  
[downtownfortcollins.com](http://downtownfortcollins.com)
- Foothills Mall  
[shopfoothills.com](http://shopfoothills.com)
- The Promenade Shops at Centerra  
[thepromadeshopsatcenterra.com](http://thepromadeshopsatcenterra.com)
- Front Range Village  
[shopfrontrangevillage.com](http://shopfrontrangevillage.com)
- The Outlets at Loveland  
[outletsatloveland.com](http://outletsatloveland.com)

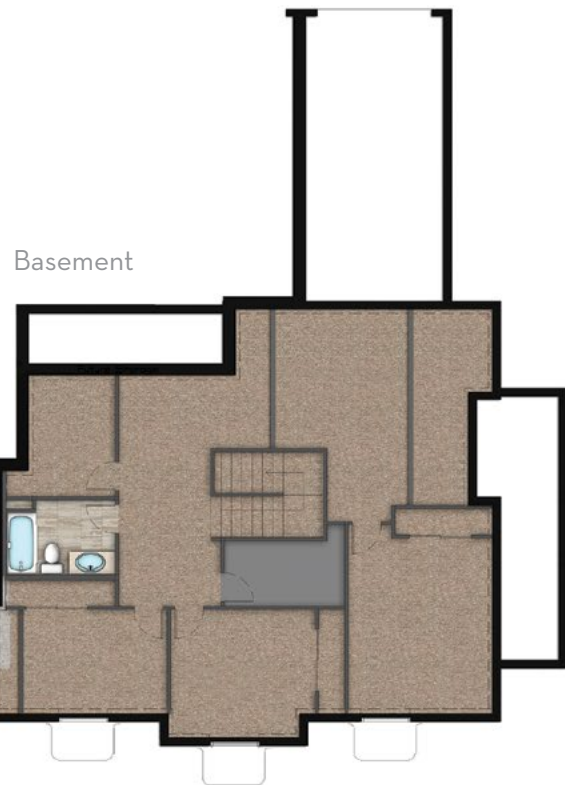
## Activities

- Fort Collins Museum of Discovery  
[fcmuseum.org](http://fcmuseum.org)
- Horsetooth Reservoir (pictured above)  
4200 County Rd. 38E,  
Fort Collins | 970.679.4570
- Rocky Mountain National Park  
[nps.gov/romo](http://nps.gov/romo)
- Winter Sports Activities  
30+ ski and snowboard areas in Colorado  
[colorado.com/activities/colorado-skiing](http://colorado.com/activities/colorado-skiing)
- Spring Canyon Community Park (pictured left)  
2626 W Horsetooth Rd. | Fort Collins



Main Level

2nd Floor



Basement

## The SOHO

1st Floor 1,208 sq. ft.  
2nd Floor 400 sq. ft.  
**Total: 1,608 sq. ft.**

1 Car Garage  
Unfinished Basement 1,133 sq. ft.

Offers H/C with 1 and 2 Car Option (per building).

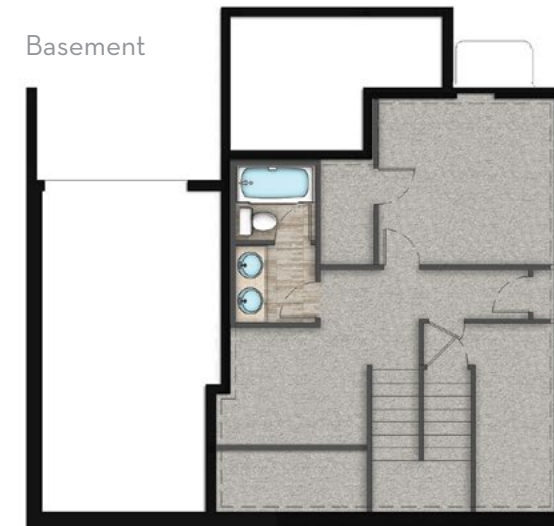


Main Level

2nd Floor



Basement



## The Bowery

1st Floor 568 sq. ft.  
2nd Floor 587 sq. ft.  
**Total: 1,155 sq. ft.**

1 Car Garage  
Unfinished Basement 536 sq. ft.

Also available in reversed floorplan.



The **Midtown**

1st Floor 673 sq. ft.  
 2nd Floor 587 sq. ft.  
**Total: 1,260 sq. ft.**

1 Car Garage  
 Unfinished Basement 651 sq. ft.



The **Tribeca**

1st Floor 1,208 sq. ft.  
 2nd Floor 400 sq. ft.  
**Total: 1,608 sq. ft.**

1 Car Garage  
 Unfinished Basement 1,133 sq. ft.

Offers H/C with 1 and 2 Car Option (per building).





**Full Main Level**

**Full Second Level**



**Full Basement**





Plans subject to change without notice





# EAST VILLAGE LLC

---

970-284-3200

EASTVILLAGEFOCO.COM